



**CLOUD
THREE SEATER LN3**

**BY LUCA NICHETTO
2015**



CLOUD THREE SEATER LN3

BY LUCA NICHETTO
2015

“My idea was to combine the Italian and Danish traditions of making sofas. Cloud has the defined shape of the Danish design tradition and the soft and cosy pillows of the Italian inheritance.”

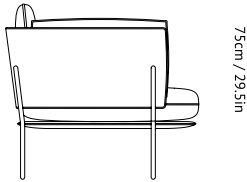
Luca Nichetto

Cloud is a series of lounge furniture designed by Luca Nichetto for &tradition. It includes a one-, two- and a three-seat sofa and a pouf, all of which combine a strong and defined weight-bearing structure with cushions and pillows ensuring maximum comfort. Cloud welcomes you in a friendly embrace while maintaining an elegant and structured external silhouette.

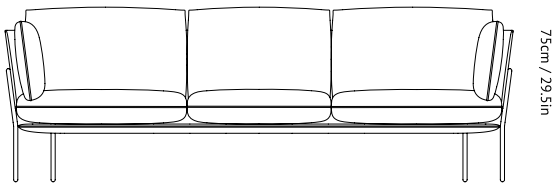
Cloud's base feature no-sag springs and the pillows are made using a mix of fire resistant HR foam and feathers, providing ultimate comfort. Its supporting structure – the back- and armrest segment and base – is made from bend plywood, while its frame and legs are produced in powder-coated steel, designed to match the colours of the upholstery.

The base fabric is Kvadrat Sunniva, and comes in the colours black blue, volcano red, dessert stone, and ivory white. In addition, the pouf comes in three multicoloured fabrics – Sonar and Pilot by Kvadrat – that complement the base colours. The pouf can be used as an ottoman or a free-standing seat. All fabrics used on the Cloud lounge series are by Raf Simons for Kvadrat.

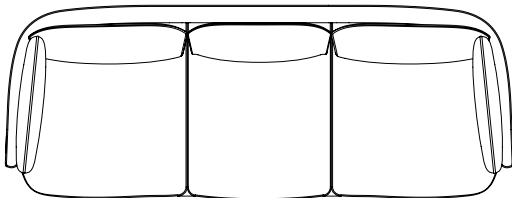
“The Cloud family is perfectly suited for contemporary living spaces, as it provides maximum comfort within relatively compact dimensions”, says Nichetto.



84cm / 33in



220cm / 86.5in





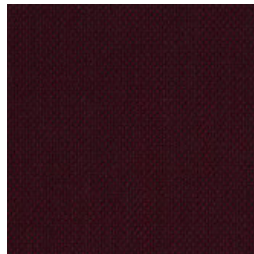
CLOUD THREE SEATER LN3

BY LUCA NICHETTO
2015

Product type	Sofa.
Production Process	The frame is made from formpressed and CNC milled plywood and the base is built from steel and solid wood. The legs are made from powder coated solid steel rods. Frame and base is covered in soft HR foam and all pillows are made from a mix of HR foam and feathers. The entire range is upholstered in Kvadrat by Raf Simons fabric.
Environment	Indoor.
Dimensions (cm / in)	H: 75cm/29.5in, D: 84cm/33in, L: 220cm/86.5in, Seat height: 40cm/15.7in.
Weight (kg)	50.00 kg
Materials	Plywood frame. Solid wood and steel base with no-zag springs. HR foam and feather pillows. Powder coated solid steel legs. Kvadrat by Raf Simons fabric upholstery.
Colours	Black Blue – Sunniva 2 192 & RAL 5004. Vulcano Red – Sunniva 2 662 & RAL 3007. Desert Stone – Sunniva 2 717 & RAL 7044. Ivory White – Sunniva 2 811 & RAL 1013.
Strength, Durability and Safety Testing	The Cloud sofa is tested for strength, durability and safety according to EN 15373 Level 2 - General contract use.
Cleaning Instructions	Please download our Material Cleaning Instructions through www.andtradition.com
Package Dimensions (cm / in)	H: 72cm/28.3in x W: 228cm/89.7in x D: 89cm/35in



Black Blue –
Sunniva 2 192 & RAL 5004



Vulcano Red –
Sunniva 2 662 & RAL 3007



Desert Stone –
Sunniva 2 717 & RAL 7044



Ivory White –
Sunniva 2 811 & RAL 1013